



**CONTACT**

Quality Leader in  
Truck Attachments

- Drum handlers
- Self powered attachments
- Lifting devices and booms
- Wide load handling
- Recycling containers
- Premises cleaning
- Fall prevention cages
- Truck forks



**Contact Attachments**  
 Mochdre Industrial Estate  
 Newtown  
 Powys  
 SY16 4LE

tel : 01686 611200  
 fax : 01686 611201

# Drum Rotator Fork Mounted

Designed to facilitate controlled and effortless pouring of the contents of either steel or 'L' Ring plastic drums.

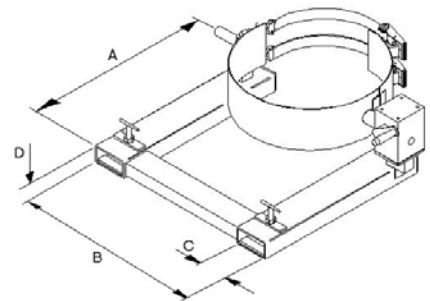


### Use :-

Designed for controlled manual rotation of 210 litre drums, the attachment slides simply onto the truck forks. The gearbox allows controlled pouring and rotation through a full 360 degrees. Variations of girdle type are available to suit either steel or plastic drums. There is also a model available to suit smaller 110 litre drums.

| Model Ref. | Capacity | No. of Drums | Drum Types | Type of Operation | 'A' Load Center | 'B' Fork Spread | 'C' Fork Width | 'D' Fork Thickness |
|------------|----------|--------------|------------|-------------------|-----------------|-----------------|----------------|--------------------|
| DTR-1 SC   | 360 kg   | 1            | 1          | Crank Handle      | 750 mm          | 942 mm          | 140 mm         | 50 mm              |
| DTR-2 SC   | 360 kg   | 1            | 1          | Loop Chain        | 750 mm          | 942 mm          | 140 mm         | 50 mm              |
| DTR-1 DS   | 360 kg   | 1            | 1,2        | Crank Handle      | 750 mm          | 942 mm          | 140 mm         | 50 mm              |
| DTR-2 DS   | 360 kg   | 1            | 1,2        | Loop chain        | 750 mm          | 942 mm          | 140 mm         | 50 mm              |
| DTR-1-110  | 200 kg   | 1            | 1          | Crank Handle      | 750 mm          | 751 mm          | 140 mm         | 50 mm              |
| DTR-2-110  | 200 kg   | 1            | 1          | Loop chain        | 750 mm          | 751 mm          | 140 mm         | 50 mm              |

| Model Ref. | Weight | C of G |
|------------|--------|--------|
| DTR-1 SC   | 90 kg  | 510 mm |
| DTR-2 SC   | 96 kg  | 510 mm |
| DTR-1 DS   | 92 kg  | 510 mm |
| DTR-2 DS   | 98 kg  | 510 mm |
| DTR-1-110  | 84 kg  | 310 mm |
| DTR-2-110  | 90 kg  | 310 mm |



### Ordering Information :-

- Truck Capacity?
- Fork width and thickness?
- Max fork spread?
- Drum type?
- Drum weight?
- Drum Diameter?

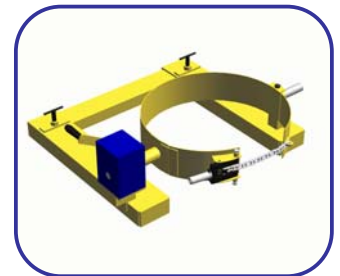
### Drum Types



Type 1, Steel



Type 2, L Ring



### Operation :-

In order to pick up the drum for transportation or pouring, set the girdle to the horizontal position by using the handle or chain fitted to the geared Turning Unit/gear box. The truck forks must then be positioned at a height such that the girdle fits around the centre of the drum, between the rolling hoops. Ensure that the drum is held securely before lifting. Once lifted into the pouring position, the drum is rotated by means of the handle or continuous loop chain. The worm gear locks the drum at any desired angle.

www.forklift-attachments.co.uk  
 email : sales@forklift-attachments.co.uk

**Freephone**  
**0800**  
**028 3332**  
 Call now for your personal  
 quote and further info

