



CONTACT

Quality Leader in
Truck Attachments

○ Drum handlers

○ Self powered attachments

○ Lifting devices and booms

○ Wide load handling

○ Recycling containers

○ Premises cleaning

○ Fall prevention cages

○ Truck forks



Contact Attachments
Mochdre Industrial Estate
Newtown
Powys
SY16 4LE

tel : 01686 611200
fax : 01686 611201

Drum Rotator Crane Slung Universal

The solution to drum rotation, if the drums you are using are of a mixed variety.



Use :-

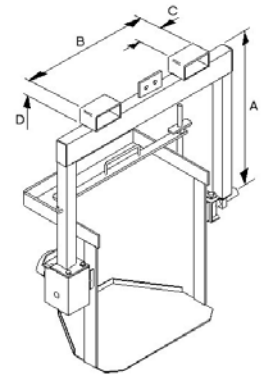
This attachment will handle any type of drum including fibre, plastic or steel, in 110 or 210 litre sizes. The platform provided ensures flexible sided drums do not slip during the rotation cycle. Can be used on a fork truck or overhead crane.

Model Ref.	Capacity	No. of Drums	Drum Types	Type of Operation	'A' Load Center	'B' Fork Spread	'C' Fork Width	'D' Fork Thickness
DTRU-3	360 kg	1	1,2,3,4	Crank Handle	784 mm	682 mm	140 mm	60 mm
DTRU-4	360 kg	1	1,2,3,4	Loop Chain	784 mm	682 mm	140 mm	60 mm

Ordering Information :-

Truck Capacity?
Fork width and thickness?
Max fork spread?
Drum type?
Drum weight?
Drum Diameter?

Model Ref.	Weight	C of G
DTRU-3	100Kg	50 mm
DTRU-4	104Kg	50 mm



Drum Types



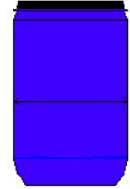
Type 1, Steel



Type 2, L Ring



Type 3, Fibre



Type 4, Egg Shaped

Operation :-

In order to pick up the drum for transportation or pouring, set the girdle to the horizontal position by using the handle or chain fitted to the geared Turning Unit/gear box. The lifting yoke must then be positioned at a height such that the girdle fits around the centre of the drum, between the rolling hoops.

www.forklift-attachments.co.uk
email : sales@forklift-attachments.co.uk

Freephone
0800
028 3332
Call now for your personal
quote and further info

